

Newsletter May 2025

Dear Parents and Carers,

What a busy, fun-filled term of learning we have had! It has been lovely to see so many parents/carers in school for our Thrive Thursdays, VE Day celebration event and Thrive parent/carer information session. We have also had the Friends of MPET hold their first AGM and the Year 6 parent group meeting with us to share plans for the first ever 'Year 6 Leavers' Fest', which we hope will become a yearly tradition.

Next term, we look forward to inviting parents/carers into their child's classroom to look through their books again on 'Marvellous Mondays'. We will also be participating in National School Sport Week and parents/carers are invited in to spectate during sports days. See further information in the posters below.

We hope that all our families have a lovely half term break. Fingers crossed for sunshine, fresh air, lots of rest and fun!

We look forward to welcoming you back for the last term of the year on Monday 2nd June.

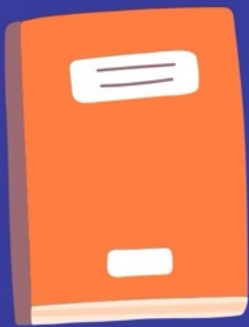
Sarah – Executive Head Teacher, Laura – Head of School, Tash – Assistant Head and SENCO (The Senior Leadership Team)

Dates for Term 6

Monday 2 nd June	First day of term 6
WC Monday 2 nd June	Y4 multiplication check
Wednesday 4 th – Friday 6 th June	Y6 Residential at PGL Liddington
WC 9 th June	Phonics screening check
WC 16 th June	National School Sport Week
Monday 16 th June	Y1 and 2 Sports Day 9:00 – 10:00am Y5 and 6 Sports Day 14:00 – 15:00pm
Tuesday 17 th June	EYFS (YR) Sports Day 9:00 – 9:45am Y3 and 4 Sports Day 14:00 – 15:00pm
Friday 20 th June	Sports Star Friday – dress as a sports star
Monday 23 rd June	Class photos in the morning
Monday 30 th June	Whole school assessment week
Thursday 17 th July	Y6 Leavers' Fest – after school evening event for Y6 pupils
Tuesday 22 nd July	Last day of term 6
Tuesday 2 nd September	INSET day – school closed to pupils
Wednesday 3 rd September	First day of term 1

Come and
celebrate your
child's learning.

Marvellous Mondays!



Join your child to look
through their books
and stick post it note
messages on your
favourite pieces.



- Week 1 Monday 2nd June - Year R
- Week 2 Monday 9th June - Year 1
- Week 4 Monday 23rd June - Year 2
- Week 5 Monday 30th June - Year 3
- Week 6 Monday 7th July - Year 4
- Week 7 Monday 14th July - Year 5
- Week 8 Monday 21st July - Year 6

Come into your child's class
before pick up from 2:50 -
3:10pm.

Term 6 2025



**NATIONAL SCHOOL
SPORTS WEEK 2025**
16-22 JUNE

**always
active**



Sports Days

Parents/Carers invited in to spectate.

EYFS: Tuesday 17th June 09:00 - 09:45am

Y1 and 2: Monday 16th June 09:00 - 10:00am

Y3 and 4: Tuesday 17th June 14:00 - 15:00pm

Y5 and 6: Monday 16th June 14:00 - 15:00pm



**Wear an 'always active' uniform
every day.**

Come to school in clothing that allows you to
be active throughout the school day.



Take part in 'active challenges'

Throughout the week, the Sports Crew will be
setting different challenges for you to try on
the playground at lunchtime.



Friday 20th June

Sports Star Friday

Bring sport to life - dress as the stars who
inspire you!

We're taking part!



Find out more:
youthsporttrust.org/NSSW
#NSSW2025 | #YSTAlwaysActive

News from Friends of MPET

A big hello from the new Friends of MPET committee! We were established at the first AGM earlier this month and are Co-Chairs Bethan Cleghorn and Jess Biddle, Treasurer Emma Aldington, Secretary Cat March and Communications Officer Zoë Franklin. Thank you for the warm welcome and support you have already shown us to get this group going!

Pupils have all been given a worksheet to design our new logo over the holiday and we're really excited to see everyone's creativity – good luck! The School Council has the important job of judging and selecting the winner next month. We're also asking the School Council to help inform ideas for how to spend the funds raised.

We recently held the first open meeting where we talked through ideas for Term 6 events we are hoping to organise: a summer party near the end of term, a summer clothes swap and a coffee morning/stay and play for parents with younger siblings and reception new starters. If you're interested in getting involved, we'd love to hear from you!

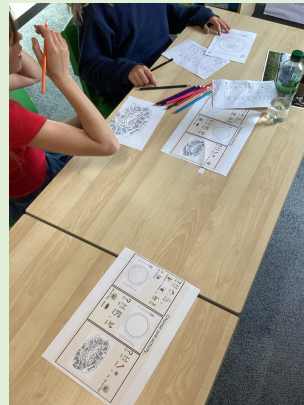
The Friends will also contribute to the Year 6 Leavers' Party for our first ever Mulberry Park class the Bumblebees!

Keep an eye out for all the latest information on our WhatsApp group which you can join by clicking [this link](#) or scanning the QR code below. The Friends page on the MPET website is being updated and you can also contact us on email at friendsofmpet@gmail.com.



VE Day Celebration

On Thursday 8th May, MPET children and families celebrated the 80th anniversary of VE day. Thank you to all those families who joined us in the celebrations. Thank you to all the teachers for their hard work organising and preparing different activities for us all to take part in!



We had 110 parents on site – the most we've had for an event this year! Thank you for joining us and making it a wonderful community celebration.

A new role for the MPET Team

Meet Leah, our new SEMH (Social, Emotional and Mental Health) mentor. Her role involves supporting many of our pupils across the school.

Some of the things she is doing:

- Movement breaks
- Sensory breaks
- Regulation time
- Zones of Regulation groups
- Social skills groups
- Checking in with children and helping them to engage with their learning



We are so excited to have Leah with us. She has already got to know so many of our children and will continue to work across the school next term.

SCHOOL TERM & HOLIDAY DATES 2024 - 2025

September 2024						
Mo	Tu	We	Th	Fr	Sa	Su
						1
2	3	4	5	6	7	8
9	10	11	12	13	14	15
16	17	18	19	20	21	22
23	24	25	26	27	28	29
30						

October 2024						
Mo	Tu	We	Th	Fr	Sa	Su
	1	2	3	4	5	6
7	8	9	10	11	12	13
14	15	16	17	18	19	20
21	22	23	24	25	26	27
28	29	30	31			

November 2024						
Mo	Tu	We	Th	Fr	Sa	Su
				1	2	3
4	5	6	7	8	9	10
11	12	13	14	15	16	17
18	19	20	21	22	23	24
25	26	27	28	29	30	

December 2024						
Mo	Tu	We	Th	Fr	Sa	Su
						1
2	3	4	5	6	7	8
9	10	11	12	13	14	15
16	17	18	19	20	21	22
23	24	25	26	27	28	29
30	31					

January 2025						
Mo	Tu	We	Th	Fr	Sa	Su
		1	2	3	4	5
6	7	8	9	10	11	12
13	14	15	16	17	18	19
20	21	22	23	24	25	26
27	28	29	30	31		

February 2025						
Mo	Tu	We	Th	Fr	Sa	Su
					1	2
3	4	5	6	7	8	9
10	11	12	13	14	15	16
17	18	19	20	21	22	23
24	25	26	27	28		

March 2025						
Mo	Tu	We	Th	Fr	Sa	Su
					1	2
3	4	5	6	7	8	9
10	11	12	13	14	15	16
17	18	19	20	21	22	23
24	25	26	27	28	29	30
31						


April 2025						
Mo	Tu	We	Th	Fr	Sa	Su
	1	2	3	4	5	6
7	8	9	10	11	12	13
14	15	16	17	18	19	20
21	22	23	24	25	26	27
28	29	30				


May 2025						
Mo	Tu	We	Th	Fr	Sa	Su
			1	2	3	4
5	6	7	8	9	10	11
12	13	14	15	16	17	18
19	20	21	22	23	24	25
26	27	28	29	30	31	

June 2025						
Mo	Tu	We	Th	Fr	Sa	Su
						1
2	3	4	5	6	7	8
9	10	11	12	13	14	15
16	17	18	19	20	21	22
23	24	25	26	27	28	29
30						

July 2025						
Mo	Tu	We	Th	Fr	Sa	Su
	1	2	3	4	5	6
7	8	9	10	11	12	13
14	15	16	17	18	19	20
21	22	23	24	25	26	27
28	29	30	31			

August 2025						
Mo	Tu	We	Th	Fr	Sa	Su
				1	2	3
4	5	6	7	8	9	10
11	12	13	14	15	16	17
18	19	20	21	22	23	24
25	26	27	28	29	30	31

 Bank Holiday

 School Holiday

 Inset Day

 Term Time