

Newsletter – October 2025

The end of the first term of the year!

Dear Parents and Carers,

What a busy, fun-filled term full of learning and social opportunities for the children! There's been so many learning opportunities for all the children both inside and outside of the classroom.

We've had lots of fundraising going on this term. The Friends of MPET have held 'donut Fridays' and autumn discos this term, which has raised lots of money for MPET. We have also held our first charity fundraiser of the year for a local charity: Bath Mind. We enjoyed 'Wear it Blue' day for World Mental Health Day and thought about how we can look after our mental health. We raised £105 for Bath Mind – thank you to all who donated.

We've loved welcoming parents/carers into school this term for meet the teacher sessions and parents' evenings. We are looking forward to having parents/carers in school next term for Fabulous Fridays (Y1-6), Activity Afternoon (YR) and Winter Concerts.

The Senior Leadership Team

Sarah – Executive Head Teacher, Laura – Head of School, Tash – Assistant Head & SENCO

Dates for Autumn Term 25/26

Monday 3 rd November	INSET day – school closed to pupils
Tuesday 4 th November	First day of term 2
Fridays in term 2	Fabulous Fridays – see poster below with more information
Friday 28 th November	Donut Friday – Friends of MPET selling donuts after school.
Tuesday 2 nd December	Reception Activity Afternoon 14:30 – 15:00pm
Friday 12 th December	Christmas jumper day – donate to Save the Children, if you can: https://www.justgiving.com/page/mulberry-park-14 EYFS/KS1 Winter Concert 14:00 – 14:25pm KS2 Winter Concert 14:30 – 15:00pm Friends of MPET selling refreshments before/after the concerts.
Wednesday 17 th December	School Christmas dinner
Thursday 18 th December	School finishes at 13:30pm for pupils. No after school club on this day.
Friday 19 th December	INSET day – school closed to pupils
Monday 5 th January	First day of term 3

Forest of Imagination

Across weeks 4 and 5 of this term, all classes in Years 3 to 6 had the exciting opportunity to visit the Forest of Imagination at Entry Hill. Forest of Imagination is a partnership between Grant Associates, House of Imagination, Feilden Clegg Bradley Studios and Bath Spa University, working alongside the creative, cultural and educational community to re-imagine a familiar space to highlight the importance of nature and imagination in all our lives, in the face of the ecological crisis.

This year, the theme was 'Imagining the Future of the Forgotten Land'- a creative transformation of the former golf course at Entry Hill as a 'pop-up' proof of concept for a permanent Forest of Imagination as an Art and Nature Park, a centre for arts and ecology. During Forest of Imagination 2025, each of the original greens became the site of imaginative, nature-based installations co-designed with artists, schools, families and the local community.

The children really enjoyed taking part in this and it was fantastic cross-curricular learning opportunity combining art and Learn Together (ethics and the environment strand).



"There was a caterpillar tunnel and we could go through it." Kaia

"We made animal masks and habitats for bugs. It was fun." Dylan

Year 5 and 6 Visit No. 1 Royal Crescent

During week 7, Year 5 and 6 visited the No. 1 Royal Crescent to enhance their curriculum learning about Georgian Bath. The children stepped into a world of historic splendour at the first house built on the Royal Crescent 250 years ago. They discovered how our wealthy Georgian forebears would have lived, the food they would have eaten and the art they would have enjoyed looking at.



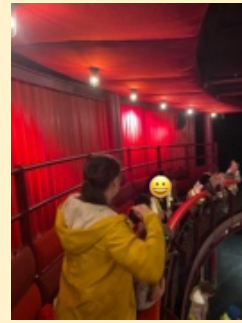
"It was fun and we learnt about things that used to happen in the Georgian era." Abu

"I enjoyed walking around and looking at the paintings famous people. Also, the fake food looked so realistic." Zack

"Their carpets were super expensive!" Éléanor

Year 2 visit the Egg Theatre

On Wednesday 15th October, Penguin class went to the Egg Theatre to watch a silly dance theatre show called Shed-ache. The children had a wonderful time and spent most of the time laughing or dancing or clapping along. It was a fantastic opportunity for our pupils and we are very grateful that the tickets were provided through the Wonderfund from the Egg.



"I thought it was really funny because there was a moving shed." Rowan

"It was funny and exciting to sit up high at the top." Erza

Reception Activity Afternoon

Parents/carers and family members were invited in on Wednesday 22nd October to take part in an activity afternoon with their child. This was a lovely opportunity for parents/carers to see how their children learn through play and to play and learn together during this session. Otter class look forward to their next one on Tuesday 2nd December.



Year 1 settle into their new classroom and learning

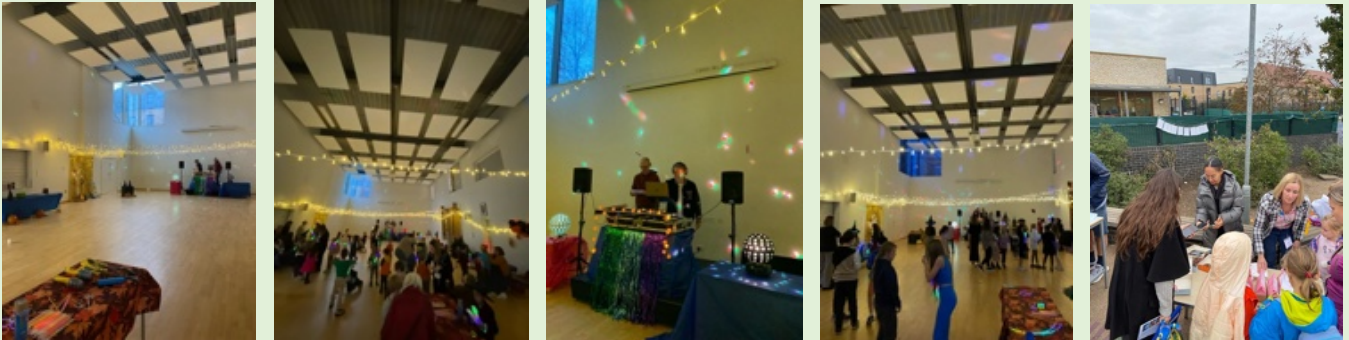
Year 1 have been working hard this time term to follow our new whole school routines and expectations. The transition from the Early Years to the National Curriculum means that the children are expected to attend to more focused teaching inputs alongside some provision. It has been lovely to see them working collaboratively and demonstrating our values of respect and responsibility in their classroom.



Friends of MPET

Thank you to all our parents/carers and family members for your continued support of the Friends. This term, Donut Fridays and the Autumn Discos have been hugely successful. A huge thank you to the Friends for their fantastic organisation of the discos. A special shout out to Dan and Liam for bringing the vibes with their amazing DJ and MC skills – the children had such a great time (as did the adults!). Thank you to MPET staff and parents who volunteered to support at the discos – it wouldn't have been possible without all of you.

We look forward to more events next term including Donut Friday in November and Winter Refreshments for sale before and after the Winter concerts.



You can find out more about Friends of MPET – a volunteer group of parents and carers who work in partnership with the school via our school website.

<https://www.mulberrypark.org.uk/parents-and-community/pta//>





Thrive at MPET

At MPET, we are a Thrive school. Thrive is a whole-school approach to right-time learning and brain development, based on neuroscience and attachment theory. It allows the adults in the school to have the tools to support all children with their social and emotional development, as well as teaching the children to support themselves.

The Thrive approach helps to fill any gaps present in emotional development, which occur based on trauma, life events and general obstacles in life and prevent children from engaging socially and emotionally. We do this by the way we interact with children, building relationships and through specific tasks on activity plans which are tailor made based on Thrive Profiles. Mulberry Park encompasses a whole-school approach to supporting children and their families to ensure that they truly do 'Thrive'.

How do we use Thrive at MPET?

Thrive is a way of assessing and supporting children's emotional and social development, which can then be used to provide personalised programmes for classes, groups and individuals.

All class teachers use a tool called Thrive-Online to screen their classes and set one or two whole class targets to work on. The results will help them to plan their social and emotional curriculum and teaching will be adapted to best meet the needs that are indicated. Strategies and activities are suggested which can be built into lessons and work.

Every class starts their day with whole class Thrive time. The children take part in play and creative activities, which are linked to their whole class Thrive target/s.

After each class screening tool is completed, children with gaps in their development, compared to age-related, 'right time' development, will be identified. For those children requiring additional support, a further assessment is carried out by a Thrive practitioner and then appropriate support is put in place. Our Thrive practitioner carries out 1:1 and group interventions with children who have gaps in their social and emotional development. These interventions usually run for 6-8 weeks before a review. When this intervention ends, these children then have an updated profile with strategies that their class teaching team can use to support them in the classroom.

Whole Class Thrive assessment screener – known as a 'Class Profile'.

Autumn Term 1

Spring Term 2



Assess

The class teacher can also complete a screener at any point in the academic year, in line with the needs and development of their class.

Child has a profile score that is significantly below their peers (in the 'rarely' category) on the class profile. Class Teacher completes Thrive referral form.

Individual baseline skills profile is completed by class teacher with support from Thrive Practitioner.

Children have some gaps, but these are broadly in line with their age and stage – also known as 'right-time development'.

Class teacher creates a class action plan and follows strategies and activities throughout their day with the class.

Dedicated whole class Thrive time each morning gives children the opportunity to develop skills in line with their class targets through arts, creative and play based activities.



Plan



Do

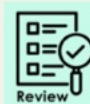
Child has significant gaps / 'interruptions' in the earliest stages of development. Child will have 6-8 weeks* of 1:1 intervention with Thrive practitioner**.

Child has some gaps / 'interruptions' in previous stage/s of development. Child joins a group intervention with Thrive practitioner or a LSA, overseen by a Thrive practitioner. Groups will be made up of pupils who have the same 'interruption'.

Individual or group skills profile completed.

Intervention comes to an end.

Individual or group action plan is shared with class team with strategies and activities to support the child/ren in class.



Review

*Some children with complex SEMH needs / trauma who are at being may remain on the caseload at the discretion of the Thrive Lead and Thrive Practitioner.

**Children with EHCPs where it is a specified provision will also continue.



Reception Activity Afternoons

Wednesday 22nd
October

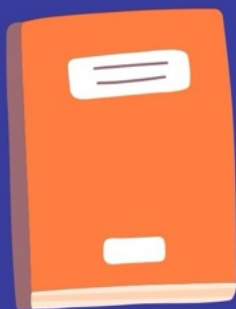
Tuesday 2nd
December

Join your child in their
classroom to take part in
activities linked to their
learning between 14:30 and
15:00pm.

Autumn Term 2025

Come and
celebrate your
child's learning.

Fabulous Fridays!



Join your child to look
through their books
and stick post it note
messages on your
favourite pieces.



- Week 1 Friday 7th November - Year 6
- Week 2 Friday 14th November - Year 5
- Week 3 Friday 21st November - Year 4
- Week 4 Friday 28th November - Year 3
- Week 5 Friday 5th December - Year 2
- Week 6 Friday 12th December - Year 1

Come into your child's class
during drop off between 8:40
and 8:50am and stay until
9:00am.

Term 2 2025



TERM & HOLIDAY DATES 2025 - 2026

Sep-25						
Mo	Tu	We	Th	Fr	Sa	Su
1	2	3	4	5	6	7
8	9	10	11	12	13	14
15	16	17	18	19	20	21
22	23	24	25	26	27	28
29	30					

Oct-25						
Mo	Tu	We	Th	Fr	Sa	Su
		1	2	3	4	5
6	7	8	9	10	11	12
13	14	15	16	17	18	19
20	21	22	23	24	25	26
27	28	29	30	31		

Nov-25						
Mo	Tu	We	Th	Fr	Sa	Su
					1	2
3	4	5	6	7	8	9
10	11	12	13	14	15	16
17	18	19	20	21	22	23
24	25	26	27	28	29	30

Dec-25						
Mo	Tu	We	Th	Fr	Sa	Su
1	2	3	4	5	6	7
8	9	10	11	12	13	14
15	16	17	18	19	20	21
22	23	24	25	26	27	28
29	30	31				

Jan-26						
Mo	Tu	We	Th	Fr	Sa	Su
			1	2	3	4
5	6	7	8	9	10	11
12	13	14	15	16	17	18
19	20	21	22	23	24	25
26	27	28	29	30	31	

Feb-26						
Mo	Tu	We	Th	Fr	Sa	Su
						1
2	3	4	5	6	7	8
9	10	11	12	13	14	15
16	17	18	19	20	21	22
23	24	25	26	27	28	

Mar-26						
Mo	Tu	We	Th	Fr	Sa	Su
						1
2	3	4	5	6	7	8
9	10	11	12	13	14	15
16	17	18	19	20	21	22
23	24	25	26	27	28	29
30	31					

Apr-26						
Mo	Tu	We	Th	Fr	Sa	Su
		1	2	3	4	5
6	7	8	9	10	11	12
13	14	15	16	17	18	19
20	21	22	23	24	25	26
27	28	29	30			

May-26						
Mo	Tu	We	Th	Fr	Sa	Su
				1	2	3
4	5	6	7	8	9	10
11	12	13	14	15	16	17
18	19	20	21	22	23	24
25	26	27	28	29	30	31

Jun-26						
Mo	Tu	We	Th	Fr	Sa	Su
1	2	3	4	5	6	7
8	9	10	11	12	13	14
15	16	17	18	19	20	21
22	23	24	25	26	27	28
29	30					

Jul-26						
Mo	Tu	We	Th	Fr	Sa	Su
		1	2	3	4	5
6	7	8	9	10	11	12
13	14	15	16	17	18	19
20	21	22	23	24	25	26
27	28	29	30	31		

Aug-26						
Mo	Tu	We	Th	Fr	Sa	Su
					1	2
3	4	5	6	7	8	9
10	11	12	13	14	15	16
17	18	19	20	21	22	23
24	25	26	27	28	29	30
31						

 Bank Holiday

 School Holiday

 Inset Day

 Term Time

School will finish at the earlier time of 1.30pm on Thursday 18th December. There will be no afterschool club on this day